



IRBLT Series: IRBLT36, IRBLT6

**IR Bullet Camera**

**Instruction Manual**



VER.:1.0. NO.:R040115/2

Thank you very much for purchasing our product. Before operating this product, please read this instruction manual carefully to ensure proper use.

## 1. Safety Precautions



### CAUTION

RISK OF ELECTRIC SHOCK. DO NOT OPEN!



CAUTION : TO REDUCE THE RISK OF ELECTRICAL SHOCK, DO NOT OPEN COVERS. NO USER SERVICEABLE PARTS INSIDE. REFER SERVICING TO QUALIFIED SERVICE PERSONNEL.

- ◆ When in use, please avoid directly contacting the eyes and do not touch the camera body, for it can be heated up to 70°F.
- ◆ When installing the camera, please avoid pointing it directly to paper or flammable materials.
- ◆ The camera is normal to be heated up to 70°C, under operation.
- ◆ Although the camera is provided with tempered glass, please avoid all direct contact to eliminate contamination, and use cotton balls dipped in cleaning alcohol to clean the window.

## 2. Description

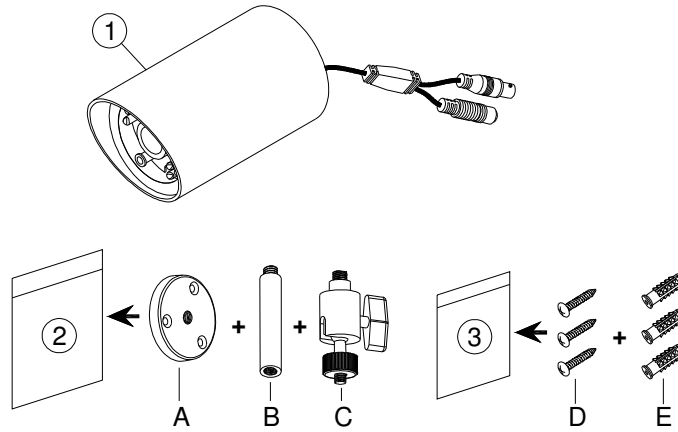
This inbuilt Infrared Illuminator camera uses a high sensitive 1/3" interline transfer Charge Coupled Device (CCD) Image Sensor, and all state circuitry, which provides extremely long life and high reliability. Offers excellent image quality and functions with low lag and high burn resistance. IR illuminator module has power saving features, built-in with automatic light-source control (light source sensor)/ the infrared illuminator is activated automatically (ON/ OFF) when the luminous intensity drops.

Highly resistant to shock and vibration, easy to install, it is an excellent choice for your CCTV system.

### 3. Feature

- ◆ With built-in high quality CCD Camera and high performance Infrared Illuminator modules.
- ◆ Long life luminary using special wavelength Infrared LED.
- ◆ Built-in light-source sensor can automatically turn on/off the infrared illuminator by detecting the light source of environment.
- ◆ High sensitivity, low smear, excellent anti-blooming and high S/N ratio.
- ◆ Waterproof suitable for indoor and outdoor use.

### 4. Contents



Item	Name of Part	Quantity
1	Camera	1
2	Mounting Bracket Bag	1
	A Base plate (optional)	1
	B Supporting Arm	1
	C Mounting Bracket	1
3	Appurtenance Bag	1
	D Fix retaining screw for Bracket	3
	E Anchor	3

## 5. Installation & Operation

- (1) Use the 3 screws provided to attach the mounting bracket to the surface or wall, assemble all spare parts to the base plate and tighten the camera wingnut (as shown on Figure 1).

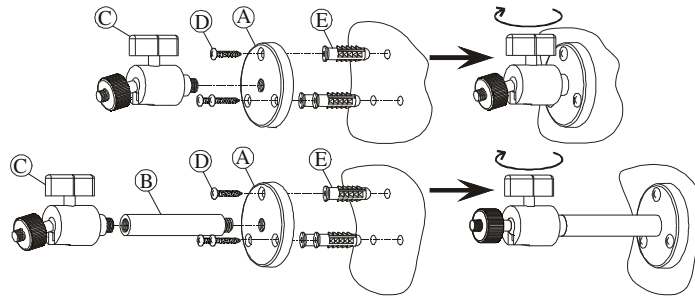


Figure 1

- (2) Screw the mounting bracket into the camera mounting post; then adjust the camera to approximate location and tighten the camera wingnut (as shown on Figure 2).

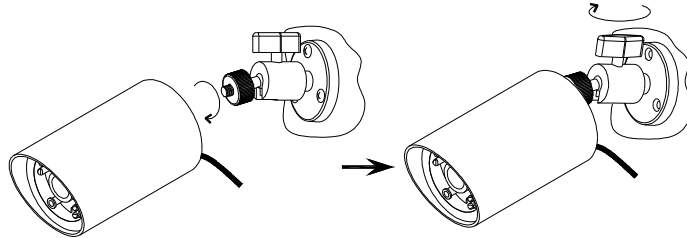


Figure 2

- (3) Connect the video output and the power input.

## 6. Specification

According to the camera purchased, select and refer to the appropriate specification below:

Color Camera					
Image Device	1/3" Color Sony Super HAD		1/3" Color Sony Super HAD (Hi-Res.)		1/3" Color Sony Ultra Super HAD (Hi-Res.)
Picture Elements	NTSC: 510x492 PAL: 500x582		NTSC: 768x494 PAL: 752x582		NTSC: 510x492 PAL: 500x582
Resolution	420 TVL		520 TVL		570 TVL
Min. Illumination	0.2 Lux/ F2.0 0 Lux (IR On)	0.3 Lux/ F2.0 Lux (IR On)	0.3 Lux/ F2.0 0 Lux (IR On)		0.4 Lux/ F2.0 0 Lux (IR On)
S/N Ratio	More than 48 dB				
Electronic Shutter	NTSC: 1/60~1/100,000, PAL: 1/50~1/110,000				
Gamma	0.45				
Lens Furnished	24 IR LED	Board Lens			
	36 IR LED				
White Balance	Auto				
Gain Control	Auto				
Sync. System	Internal				
Video Output	1 Vp-p/ 75 Ohms				
Power Supply	DC 12V±10% (option: AC100~240V)				
Power Consumption (DC 12V)	IR OFF	200mA max.	190mA max.	200mA max.	250mA max.
	24 IR LED ON	440mA max.	400mA max.	440mA max.	500mA max.
	36 IR LED ON	650mA max.	550mA max.	650mA max.	750mA max.
Power Consumption (DC 12V/ AC 24V)	IR OFF	200mA max.	190mA max.	200mA max.	250mA max.
	24 IR LED ON	550mA max.	500mA max.	550mA max.	620mA max.
Power Consumption (AC 100~240V)	IR OFF	200mA max.	190mA max.	200mA max.	250mA max.
	24 IR LED ON	500mA max.	550mA max.	600mA max.	680mA max.

<b>B/W Camera (24 IR LED only)</b>			
<b>Image Device</b>	1/3" B/W Sony Super HAD	1/3" B/W Sony Super HAD	1/3" B/W Sony Super HAD
<b>Picture Elements</b>	EIA: 510x492 CCIR: 500x582	EIA: 768x494 CCIR: 752x582	EIA: 510x492 CCIR: 500x582
<b>Resolution</b>	420 TVL	600 TVL	400 TVL
<b>Min. Illumination</b>	0.1 Lux/ F2.0	0.2 Lux/ F2.0	0.3 Lux/ F2.0
<b>S/N Ratio</b>	More than 48dB		
<b>Electronic Shutter</b>	EIA: 1/60 ~ 1/100,000, CCIR: 1/50 ~1/110,000		
<b>Gamma</b>	0.45		
<b>Lens Furnished</b>	Board Lens		
<b>Gain Control</b>	Auto		
<b>Sync. System</b>	Internal		
<b>Video Output</b>	1 Vp-p/ 75 Ohms		
<b>Power Supply</b>	DC 12V±10% (option: AC100-240V)		
<b>Power Consumption (DC 12V)</b>	IR OFF	180mA max.	
	24 IR LED ON	400mA max	
<b>Power Consumption (DC 12V/ AC 24V)</b>	IR OFF	180mA max	
	24 IR LED ON	500mA max	
<b>Power Consumption (AC 100-240V)</b>	IR OFF	180mA max	
	24 IR LED ON	550mA max	

<b>Infrared Illuminator Module</b>	
<b>Infrared Luminary</b>	24/ 36 pieces IR-LED
<b>Wavelength</b>	850 nm
<b>Beam Spread Angle</b>	20° 50° (24 IR LED)/ 20° 35° (36 IR LED)
<b>Illuminate Distance</b>	20M (24 IR LED)/ 30M (36 IR LED)
<b>Auto Power On/ Off</b>	Cds auto control
<b>System Device</b>	
<b>Operating Temp.</b>	-10°~50°C (14°~122°F)
<b>Construction</b>	Aluminum Case
<b>Filter</b>	Tempered Glass
<b>Waterproofing Criterion</b>	IP66
<b>Weight</b>	0.6 Kg
<b>Dimensions</b>	φ68x122 (L) mm (Body only)

*(Note: Design and specifications are subject to change without prior notice.)*